

**GLASS DAPPEN DISHES**



- ITEM #601-001 Clear
- ITEM #601-002 Amber
- ITEM #601-003 Blue
- ITEM #601-004 Green



- Standard Dappen Dish.
- Do not Autoclave.
- Easy to clean.
- Sold Individually or Box of 12pcs.

**MEDICAMENT BOTTLES**



- Locking lids for good sealing capabilities.
- Available in 4 colors for coding of chemicals.
- Easy to use and store.
- High quality glass, economically priced.
- 10ml volume
- Do not Autoclave.

**ROUND TYPE**

- ITEM #604-001 Clear
- ITEM #604-002 Amber
- ITEM #604-003 Blue
- ITEM #604-004 Green

**SQUARE TYPE**

- ITEM #605-001 Clear
- ITEM #605-002 Amber
- ITEM #605-003 Blue
- ITEM #605-004 Green



**MIXING SLAB**



- High quality, competitively priced Mixing Slabs available in 5 sizes.
- Do not Autoclave.



- ITEM #603-005 LT  
- Dimensions : 150 x 15 x 80m/m (W x H x D)
- ITEM #603-004 LM  
- Dimensions : 150 x 10 x 75m/m (W x H x D)
- ITEM #603-003 M  
- Dimensions : 122 x 5 x 75m/m (W x H x D)
- ITEM #603-002 L  
- Dimensions : 112 x 6 x 76m/m (W x H x D)
- ITEM #603-001 S  
- Dimensions : 76 x 6 x 65m/m (W x H x D)

**CHAIR SIDE TABLE**



- ITEM #712-001 White
- Comes with attachments.
- Can be adapted to several types of chairs.
- Hole Diameter : available from 25 to 50m/m.
- Easy access to instruments.
- Dimensions : 390 x 30 x 235m/m (W x H x D)



**GLASS ENDO ORGANIZER**

- ITEM #602-000



- Shallow compartment walls for liquid sterilization.
- 6 inch diameter dish with 12 shallow wall compartments.
- Glass lid with depressions for chemicals.
- Do not Autoclave.



**MEDICAMENT BOTTLE STAND**

- ITEM #606-001



- Fits 5 Round or Square Medicament Bottles.
- Opaque high quality glass.
- Do not Autoclave.
- Color : Milky White
- Dimensions : 215 x 27 x 55m/m (W x H x D)



**BIOHAZARD HANDY HOOPER**

- ITEM #704-101 White



- A small plastic waste receptacle for biohazard items
- Can be wall mounted
- Dimensions : 170 x 160 x 100m/m(W x H x D)



**TISSUE HOLDER**

- ITEM #712-101 White



- Can be adapted to several types of chairs.
- Tissue box holder fits on unit chair pole.
- Hole Diameter : available from 25 to 50m/m.
- Dimensions : 245 x 54 x 125m/m(W x H x D)

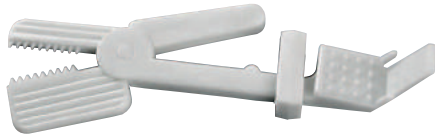


### X-RAY FILM HOLDER

ITEM #750-001



- Used for Anterior and Posterior X-Ray.
- Angled for patient comfort in Anterior x-rays.



### RETRACTOR (TYPE A)

ITEM #740-001 Adult  
ITEM #740-002 Child

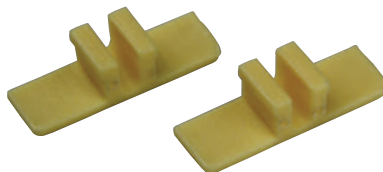


- Soft Flexible Plastic
- Pkg. of 2



### COLOR CODE CLIP

ITEM #706-101 White  
ITEM #706-102 Gray  
ITEM #706-103 Yellow  
ITEM #706-104 Mauve  
ITEM #706-105 Beige  
ITEM #706-106 Blue



- 4pcs in a polybag
- Snap-in clips for trays, tubs and steri system cassettes
- Dimensions : 26 x 8 x 8m(W x H x D)

### ID-RING

- Silicone rubber
- Standard size(inner diameter 3.6mm)
- Pkg. of 120



- ITEM #942-101 White
- ITEM #942-102 Black
- ITEM #942-103 Brown
- ITEM #942-104 Green
- ITEM #942-105 Orange
- ITEM #942-106 Red
- ITEM #942-107 Gray
- ITEM #942-108 Yellow
- ITEM #942-109 Pink
- ITEM #942-110 Light Brown
- ITEM #942-191 Assorted



### CHEEK RETRACTOR (TYPE B)

- ITEM #741-001 Adult
- ITEM #741-002 Child



- Soft Flexible Plastic
- Expands the mouth widely
- Pkg. of 2



### ENDO TRAINING BLOC

- ITEM #943-100



- Clear acrylic blocs.
- Ideal for training bloc for new techniques.
- Used for .04 tapered NiTi Rotary Files(curved type)
- Pkg. of 10

### NEEDLE CAPPER STAND

- ITEM #705-101 White



- One-Handed uncapping
- Syringe is conveniently positioned
- Secured to table top
- Dimensions : 45 x 36 x 31m/m(W x H x D)



### COTTON ROLL DISPENSER

- ITEM #770-001 White



- Holds approximately 60 Cotton Rolls.
- Features pull out drawer for easy cotton dispensing.
- Lid flips back for refilling.
- Non-slip bottom.
- Adjustable width for Cotton Roll in 20, 30 and 40m/m.
- Dimensions: 170 x 101 x 52m/m(W x H x D)



### AMALGAM WELL



- Non slip Type with Rubber Base

- ITEM #819-001 Type A  
- Diameter: 30m/m, Height 20m/m
- ITEM #819-002 Type B  
- Diameter: 20m/m, Height 27m/m
- ITEM #819-003 Type C  
- Diameter: 20m/m, Height 30m/m
- ITEM #819-004 Type D  
- Diameter: 23m/m, Height 23m/m
- ITEM #819-005 Type E  
- Diameter: 31m/m, Height 23m/m



### DISPOSABLE PLASTIC BOWL

- ITEM #707-101 White



- Rigid Mixing Bowls
- Pkg. of 5
- Diameter : 125m/m, Height : 85m/m



### MIRACLE SUCTION

Innovative Multifunctional Mirrors with a Suction Function

- These mirrors features suction on the bottom and front sides to free up your handles and save your time.
- A major benefit fewer instruments in the oral cavity.
- Sure Grip autoclavable silicone handles.
- Fits into all suction unit on the dental chair.
- Available Adapters in 11m/m & 16m/m.

ITEM #901-001 Regular Package 11m/m  
 ITEM #901-003 Regular Package 16m/m  
 Contents: 5 autoclavable mirrors with detachable handle, 2 hoses, 2 adapters, O-rings and cleaning brush.

ITEM #901-002 Small Package 11m/m  
 ITEM #901-004 Small Package 16m/m  
 Contents: 2 autoclavable mirrors with detachable handle, 1 hose and 1 adapter.



Regular Package



Small Package